

有關郊野公園的資訊，請瀏覽本署網頁：

For information about country parks, please refer to the departmental homepage:

[www.afcd.gov.hk](http://www.afcd.gov.hk)



郊野公園指定燒烤地點  
Country Parks  
Designated Barbecue Sites



郊野公園指定露營地點  
Country Parks  
Designated Camp Sites



郊野公園越野單車徑或地點  
Country Parks  
Designated Mountain Bike  
Trails and Sites



郊野公園遠足安全指引  
Country Parks  
Hiking Safety Guidelines

為他人著想，請不要對其他遊人構成滋擾。經過鄉郊地區時，請尊重村民，切勿損毀私人財產。緊記保持郊野清潔，並將垃圾帶走。

**You** should be considerate and avoid causing disturbance to other visitors. When passing village areas, you should respect villagers and do not damage private properties. Remember to keep the countryside clean and take away your litter.



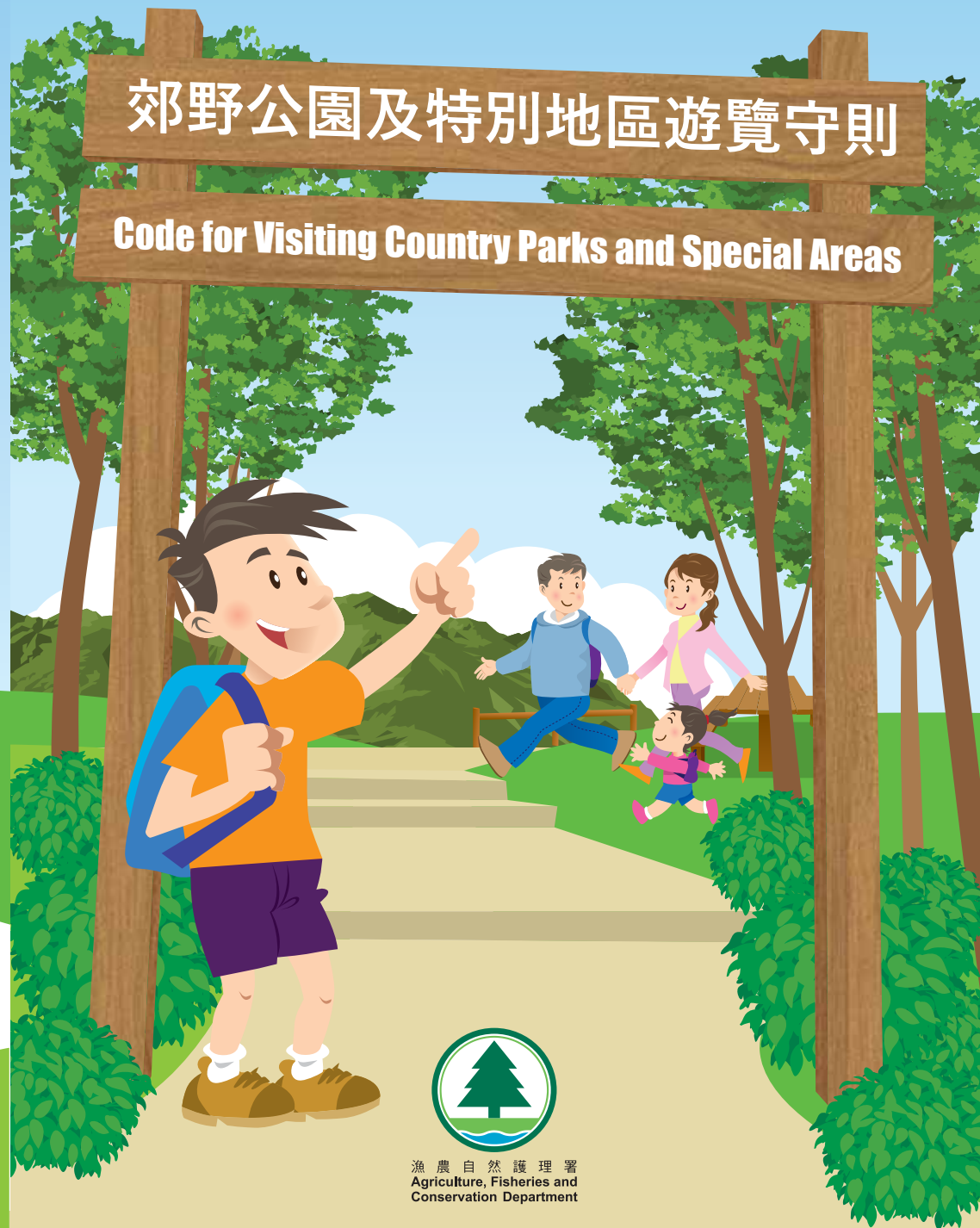
漁農自然護理署  
Agriculture, Fisheries and  
Conservation Department



印刷日期 Date of publication : 11/2014

# 郊野公園及特別地區遊覽守則

## Code for Visiting Country Parks and Special Areas



漁農自然護理署  
Agriculture, Fisheries and  
Conservation Department

市民遊覽郊野公園及特別地區時，應留意《郊野公園及特別地區規例》和其他有關保護野生動植物和自然環境的法例，違例者可被檢控。郊遊人士請特別留意以下各點：

When visiting country parks and special areas, members of the public should observe the Country Parks and Special Areas Regulations and other relevant legislation for protecting wildlife and environment. Offenders are subject to prosecution. In particular, please pay attention to the following:



切勿亂拋垃圾  
Don't litter



切勿損害任何植物  
或擾亂土壤  
Don't damage any plant  
or disturb soil



切勿狩獵，傷害或餵飼  
任何野生動物  
Don't hunt, hurt or feed  
any wild animal



愛護公物  
Take good care of  
public facilities



盡量降低聲量  
Keep the voice down



妥善控制你的狗隻  
Control your dog



禁止攜帶任何獵捕  
或陷阱類器具或槍械  
Don't carry any hunting  
or trapping appliance or arms



未經許可，切勿駕駛  
車輛進入郊野公園  
Don't drive your vehicle into  
country parks without  
a permit



切勿操縱任何動力驅動的模型  
飛機、模型車輛或模型船  
Don't operate any power  
driven model aeroplane,  
model vehicle or model boat



只可在指定的越野單車徑  
或地點踏單車  
Ride bicycle only in  
designated mountain  
bike trails and sites



只可在指定露營地點  
露營或建立帳幕  
Camp or erect a tent  
only in designated  
camp sites



只可在指定燒烤或  
露營地點生火  
Use fire only in designated  
barbecue sites or  
camp sites

注意：

以上所列並非盡錄郊野公園及特別地區內受管制的活動。有關詳情，請參閱香港法例第208A章《郊野公園及特別地區規例》、第170章《野生動物保護條例》和第96章《林區及郊區條例》。

Note:

The above is not an exhaustive list of activities controlled in country parks and special areas. For details, please refer to the Country Parks and Special Areas Regulations (Cap. 208A), Wild Animals Protection Ordinance (Cap. 170) and Forests and Countryside Ordinance (Cap. 96).